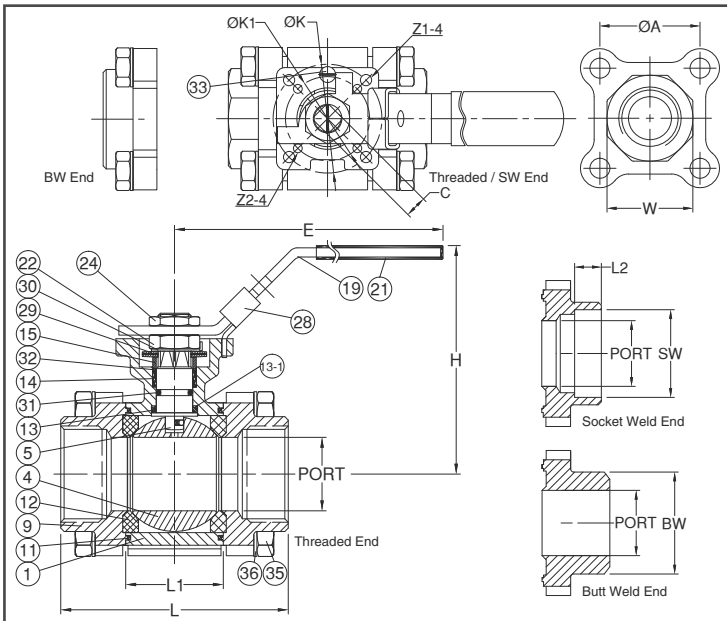
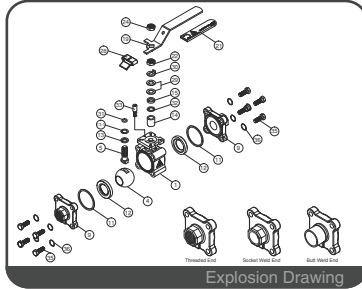
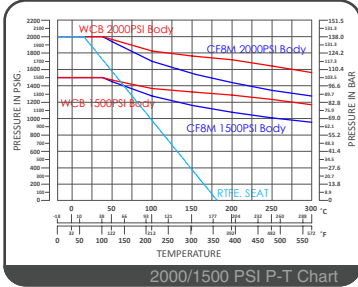




CRN  
CERTIFICATED



### FEATURES

- Investment Cast Body Construction
- ISO 5211 Direct Mounting Flange
- 3 Pieces Body Design with 8 Bolts
- In-Line Maintenance
- Blow-Out-Proof Stem Design & Anti-Static Device
- Available for Pneumatic or Electric Actuator
- NACE MR0175 is available upon request
- Super Alloy materials for highly corrosive medium are available upon request

AUTOMATION  
AVAILABLE

### SPECIFICATIONS

- Size Range 1/4" ~ 2" ( DN8 ~ DN50 )
- End Connection Threaded / Socket / Butt Weld Ends
- Working Pressure 2000 PSI ( CWP ) for 1/4" ~ 1" / PN140 for DN8 ~ DN25  
1500 PSI ( CWP ) for 1-1/4" ~ 2" / PN100 for DN32 ~ DN50
- Steam Pressure 150 PSIG. Saturated Steam for RTFE.
- Temperature Range -4 to 356 °F ( -20 to 180 °C ) for RTFE.

### STANDARDS

- Design ASME/ANSI B16.34
- Mounting Flange ISO 5211
- Threaded End NPT/ BS 21 ( BSP ) / BSPT / ISO 228-1 / DIN 2999 / ISO 7-1Rp
- Socket Weld End ASME/ANSI B16.11
- Butt Weld End ASME/ANSI B16.25
- Face to Face MFG
- Material ASTM
- Pressure Testing API 598

### CERTIFICATE

- Fire Safe API 607 6<sup>th</sup> Edition / ISO 10497
- Quality Assurance ISO 9001
- Material Certificate EN 10204-3.1 MTR
- CE Approval PED 97/23/EC Module H
- Canadian Certificate CRN

### MATERIAL LIST

NO.	PART NAME	MATERIAL ( more options available )
1	BODY	ASTM A351 Gr.CF8M   ASTM A216 Gr.WCB
4	BALL	ASTM A351 Gr.CF8M
5	STEM	ASTM A276 Gr.316
9	END CAP	ASTM A351 Gr.CF8M   ASTM A216 Gr.WCB
11	BODY SEAL	GRAPHITE
12	SEAT	RTFE.(15%G.F.)
13	THRUST WASHER	GRAPHITE
13-1	THRUST WASHER	PTFE.
14	STEM PACKING	GRAPHITE
15	GLAND BUSH	SS304
19	HANDLE	SS304
21	HANDLE COVER	PLASTIC
22	STEM NUT	SS304
24	HANDLE NUT	SS304
28	LOCKING DEVICE	SS304
29	BELLEVILLE WASHER	SUS304-CSP
30	TAB WASHER	SS304
31	O-RING	VITON®
32	PACKING FOLLOWER	PTFE.+25%G.F.
33	STOP PIN	SS304
35	BODY BOLT	SS304
37	BOLT NUT	SS304

### DIMENSION

SIZE		PORT	L	L1	E	H	C	W	ØA	ØK	ØK1	Z1	Z2	L2	SW	BW		
DN8	1/4"	10.0	64.8	20.5	112.0	72.4	9	29.4	32.0	50	F05	36	F03	7	6	10.0	14.2	17.7
DN10	3/8"	10.0	64.8	20.5	112.0	72.4	9	29.4	32.0	50	F05	36	F03	7	6	10.0	17.5	17.7
DN15	1/2"	15.0	72.5	24.5	112.0	80.0	9	30.3	35.0	50	F05	36	F03	7	6	10.0	21.8	21.9
DN20	3/4"	20.0	84.2	31.5	112.0	84.0	9	36.5	41.3	50	F05	36	F03	7	6	13.0	27.4	27.3
DN25	1"	25.0	105.3	41.3	136.3	94.9	9	44.5	48.0	50	F05	36	F03	7	6	13.0	34.1	34.7
DN32	1-1/4"	32.0	111.0	48.4	186.8	102.4	9	54.1	56.2	50	F05	36	F03	7	6	13.0	42.7	42.8
DN40	1-1/2"	38.0	127.3	56.3	197.9	122.8	14	60.0	63.6	70	F07	50	F05	9	7	13.0	49.0	49.1
DN50	2"	50.0	153.4	72.0	197.9	132.1	14	76.0	79.2	70	F07	50	F05	9	7	16.0	61.0	60.9

### DIMENSION

SIZE		PORT	L	L1	E	H	C	W	ØA	ØK	ØK1	Z1	Z2	L2	SW	BW		
DN8	1/4"	0.39	2.55	0.80	4.40	2.85	0.35	1.15	1.25	1.96	F05	1.41	F03	0.27	0.23	0.39	0.55	0.69
DN10	3/8"	0.39	2.55	0.80	4.40	2.85	0.35	1.15	1.25	1.96	F05	1.41	F03	0.27	0.23	0.39	0.68	0.69
DN15	1/2"	0.59	2.85	0.96	4.40	3.14	0.35	1.19	1.37	1.96	F05	1.41	F03	0.27	0.23	0.39	0.85	0.86
DN20	3/4"	0.78	3.31	1.24	4.40	3.30	0.35	1.43	1.62	1.96	F05	1.41	F03	0.27	0.23	0.51	1.07	1.07
DN25	1"	0.98	4.14	1.62	5.36	3.73	0.35	1.75	1.88	1.96	F05	1.41	F03	0.27	0.23	0.51	1.34	1.36
DN32	1-1/4"	1.25	4.37	1.90	7.35	4.03	0.35	2.12	2.21	1.96	F05	1.41	F03	0.27	0.23	0.51	1.68	1.68
DN40	1-1/2"	1.49	5.01	2.21	7.79	4.83	0.55	2.36	2.50	2.75	F07	1.96	F05	0.35	0.27	0.51	1.92	1.93
DN50	2"	1.96	6.03	2.83	7.79	5.20	0.55	2.99	3.11	2.75	F07	1.96	F05	0.35	0.27	0.62	2.40	2.39